

Report No.: 51.03515-Recessed Downlight    Test Time: 2022-05-25 19:02

## Luminaire Property

Luminaire Category: Bridgelux 3535 3000K CRI90

Voltage: 219.0 V

Current: 0.013 A

Power: 1.40 W

Power Factor: 0.484

## Photometric Results

CIE Class: Direct

Measurement Flux: 74.7 lm

Downward Ratio: 100%

Total Rated Lamp Lumens: 74.7 lm

Efficiency: 100%

Upward Ratio: 0%

Horizontal Diffuse Angle(25%,50%,75%,100%): H18.1,H12.5,H8.1,H1

Vertical Diffuse Angle(25%,50%,75%,100%): V18.1,V12.5,V8.1,V1

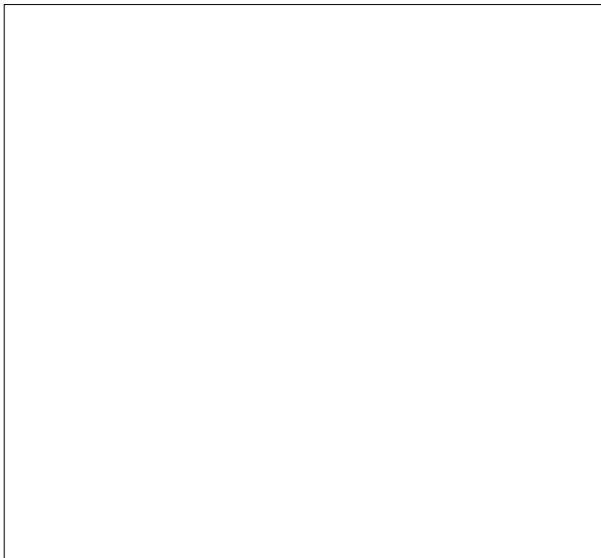
Luminaire Efficacy Rating (LER): 53

Central Intensity: 1184.37 cd

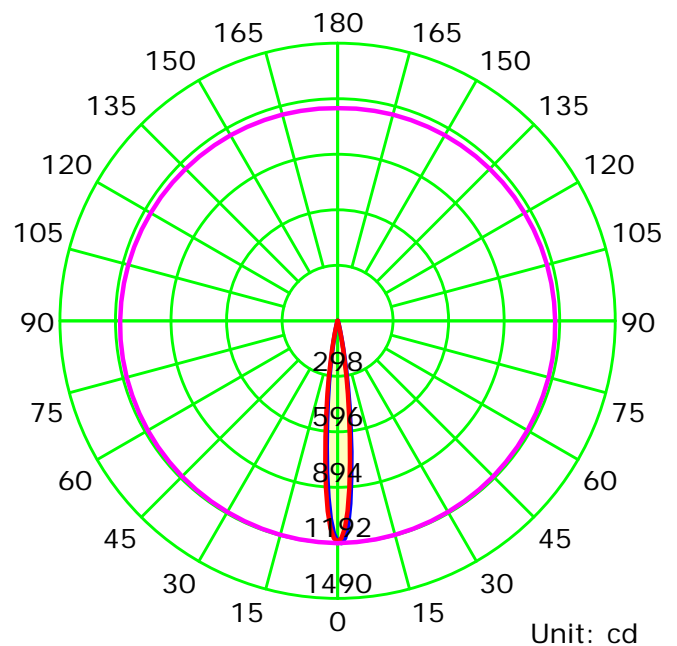
Max. Intensity: 1193.36 cd

Pos of Max. Intensity: H0 V1

Picture Of Luminaire



Luminous Intensity Distribution Curve



Average Diffuse Angle(50%): 12.5°

— C0-C180 — C90-C270 — G1

C Plane (°): 0.0-180.0: 180.0

Test Lab:

Test Type: TYPE C

Temperature:

Operator:

Gamma Plane (°): 0.0-90.0: 1.0

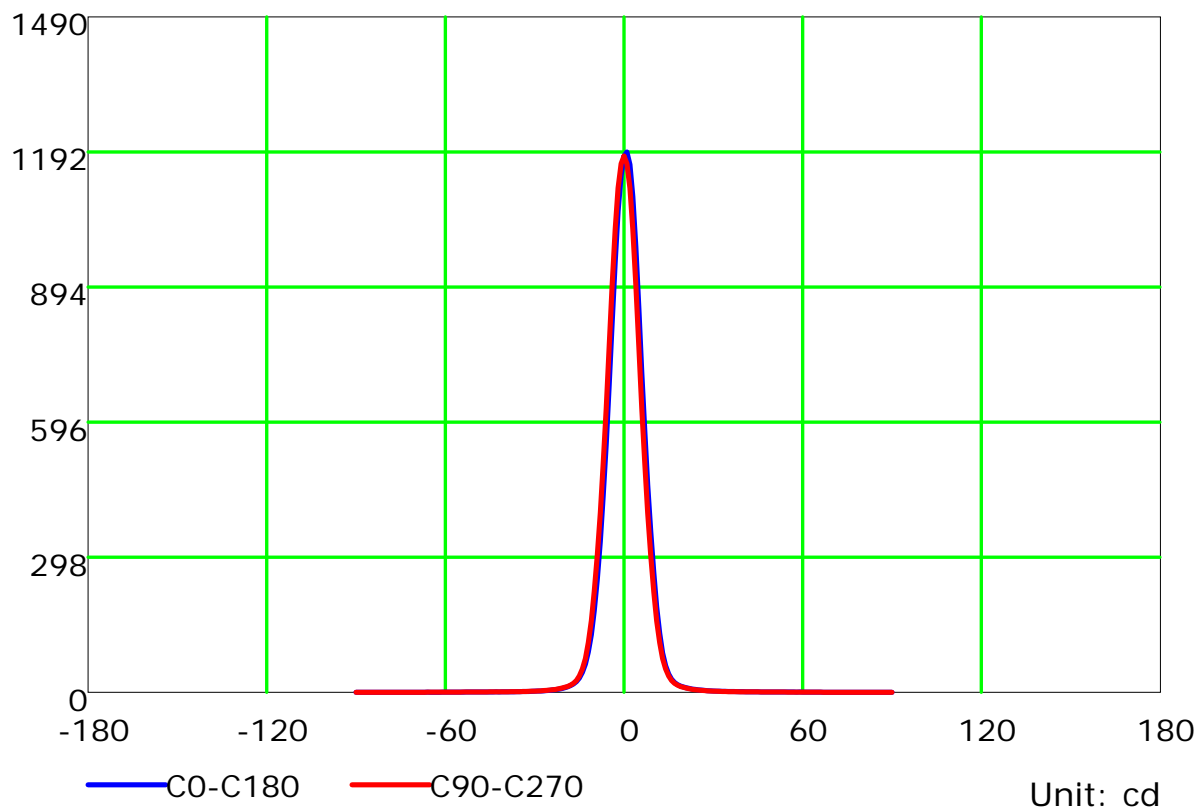
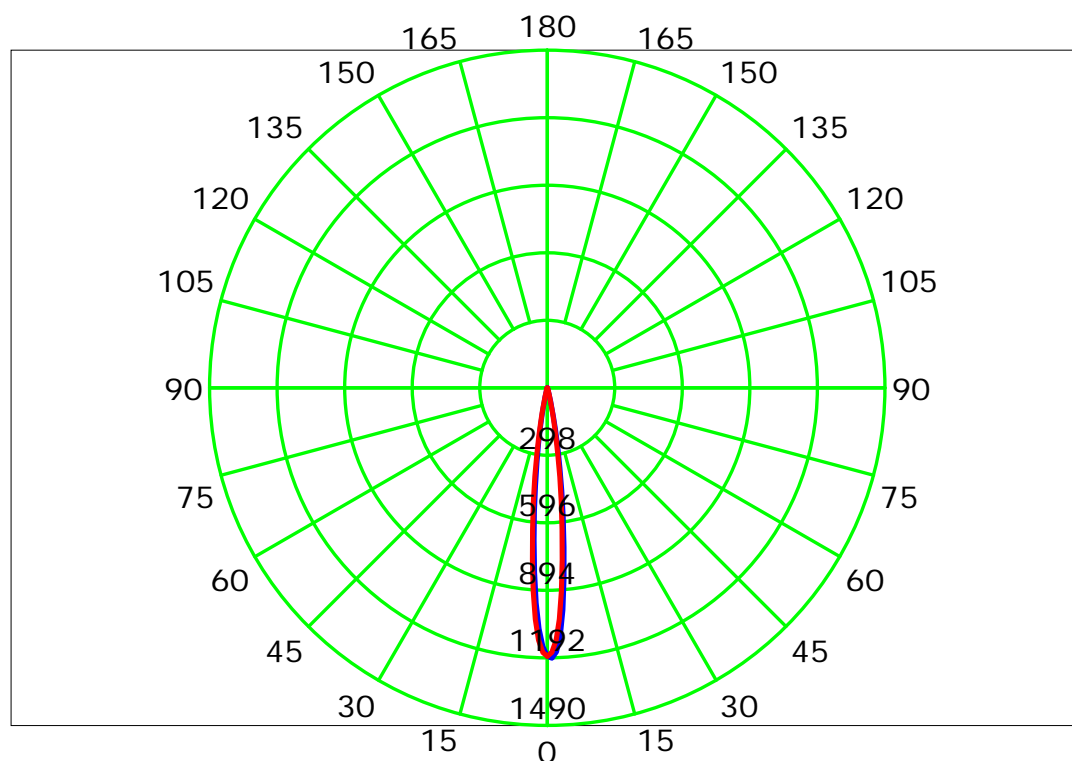
Test Device: CHL-6E

Distance: 3.000 m

Humidity:

Inspector:

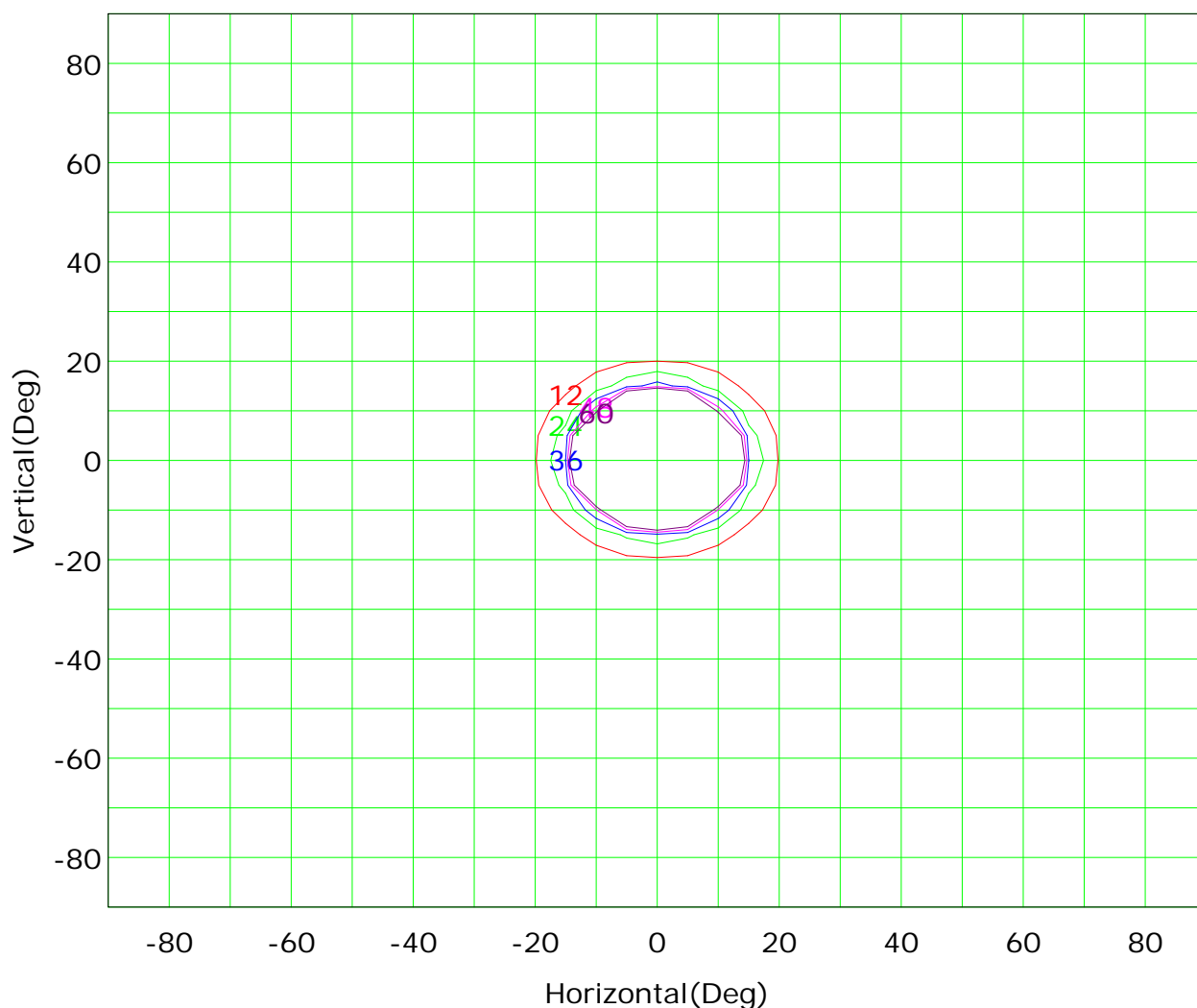
## Luminous Intensity Distribution Curve



C Plane (°): 0.0-180.0: 180.0  
Test Lab:  
Test Type: TYPE C  
Temperature:  
Operator:

Gamma Plane (°): 0.0-90.0: 1.0  
Test Device: CHL-6E  
Distance: 3.000 m  
Humidity:  
Inspector:

## Isocandela (rectangle)



Imax (100%): 1193 cd

( 1%):	12 cd	( 2%):	24 cd
( 3%):	36 cd	( 4%):	48 cd
( 5%):	60 cd		

C Plane (°):0.0-180.0: 180.0

Test Lab:

Test Type: TYPE C

Temperature:

Operator:

Gamma Plane (°):0.0-90.0: 1.0

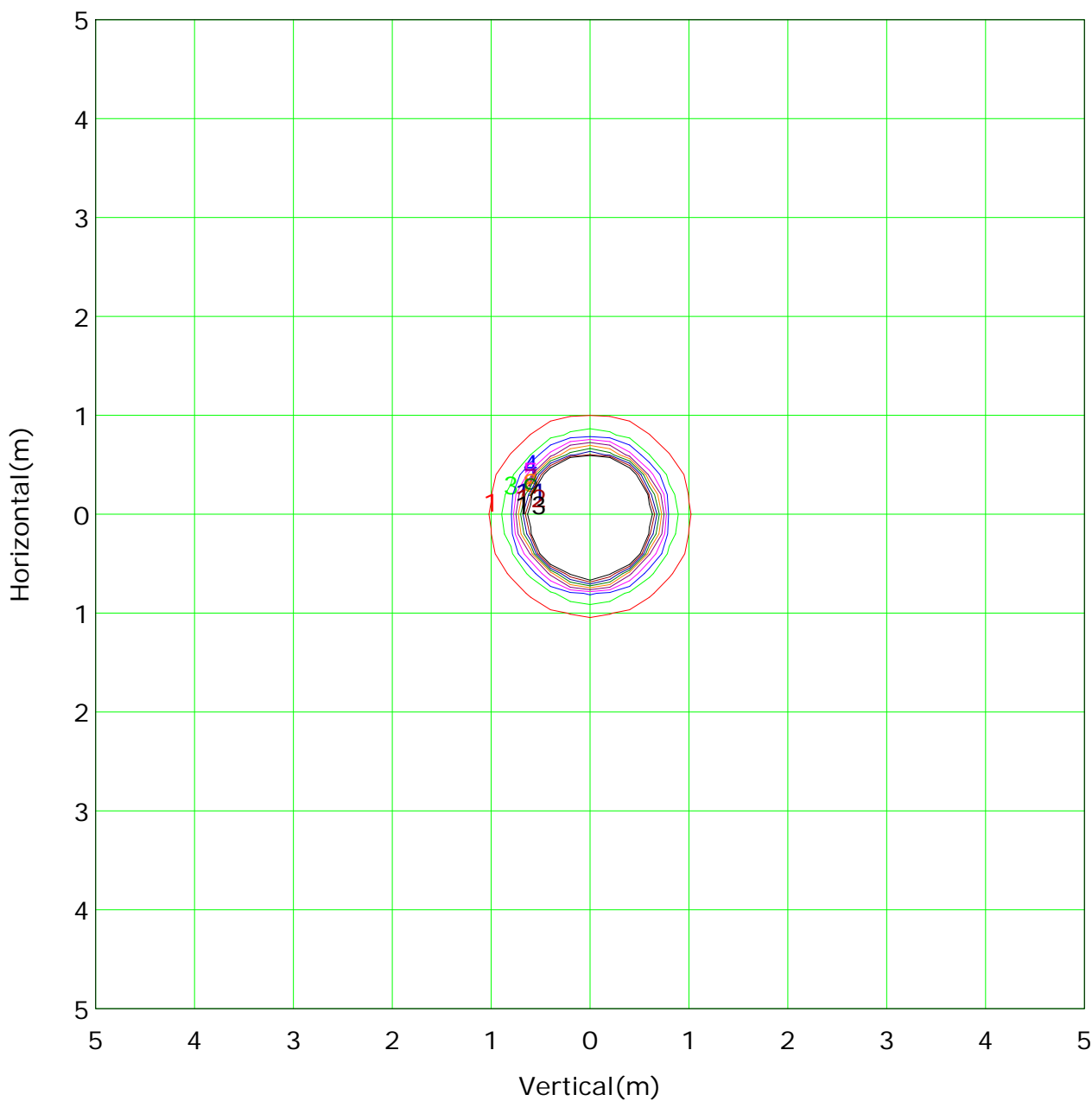
Test Device: CHL-6E

Distance: 3.000 m

Humidity:

Inspector:

## IsoLux Plot



Mounting Height: 3m		Max Lux(100%): 133 lx	
— ( 1%):	1 lx	— ( 2%):	3 lx
— ( 3%):	4 lx	— ( 4%):	5 lx
— ( 5%):	7 lx	— ( 6%):	8 lx
— ( 7%):	9 lx	— ( 8%):	11 lx
— ( 9%):	12 lx	— (10%):	13 lx

C Plane (°):0.0-180.0: 180.0

Test Lab:

Test Type: TYPE C

Temperature:

Operator:

Gamma Plane (°):0.0-90.0: 1.0

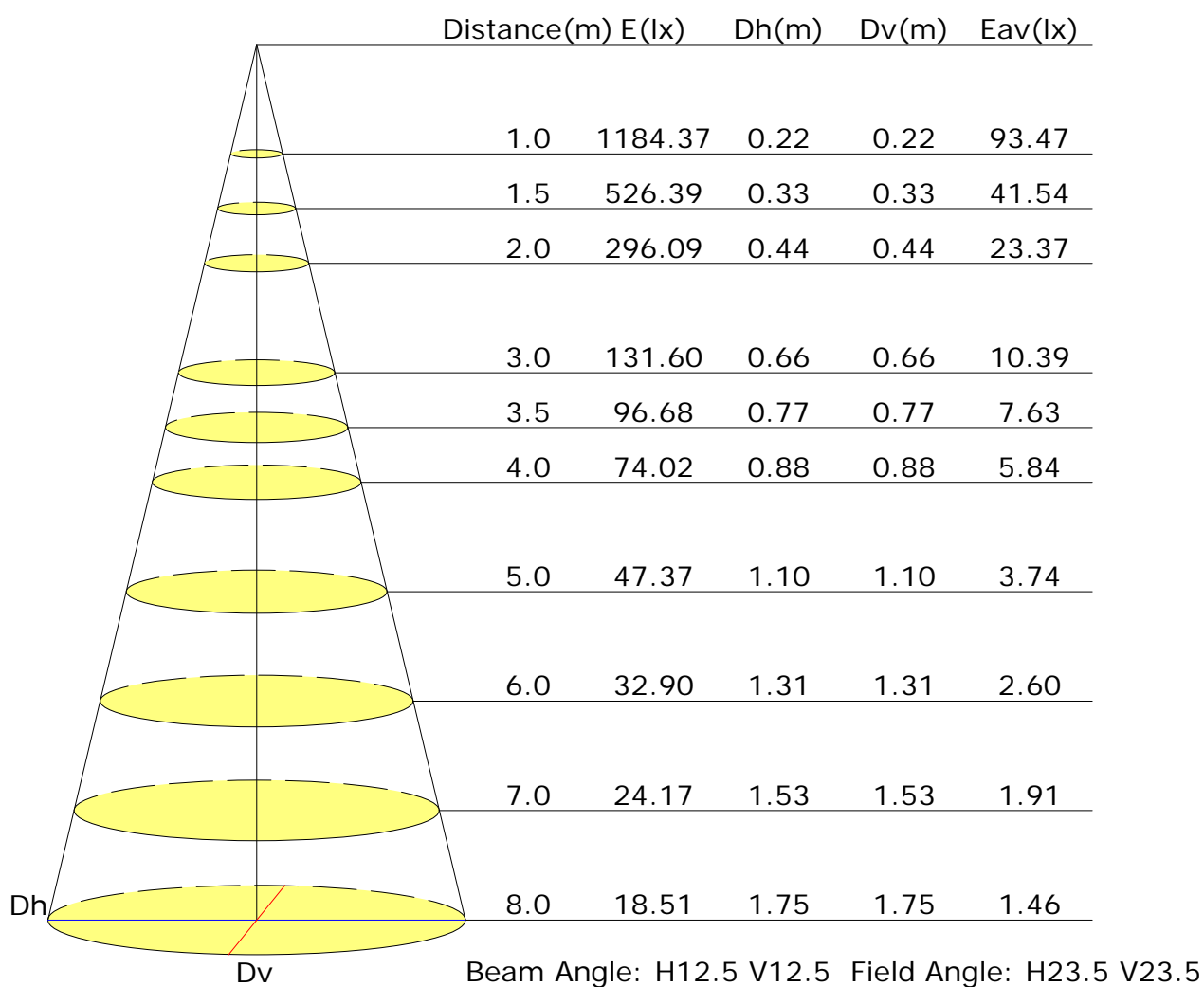
Test Device: CHL-6E

Distance: 3.000 m

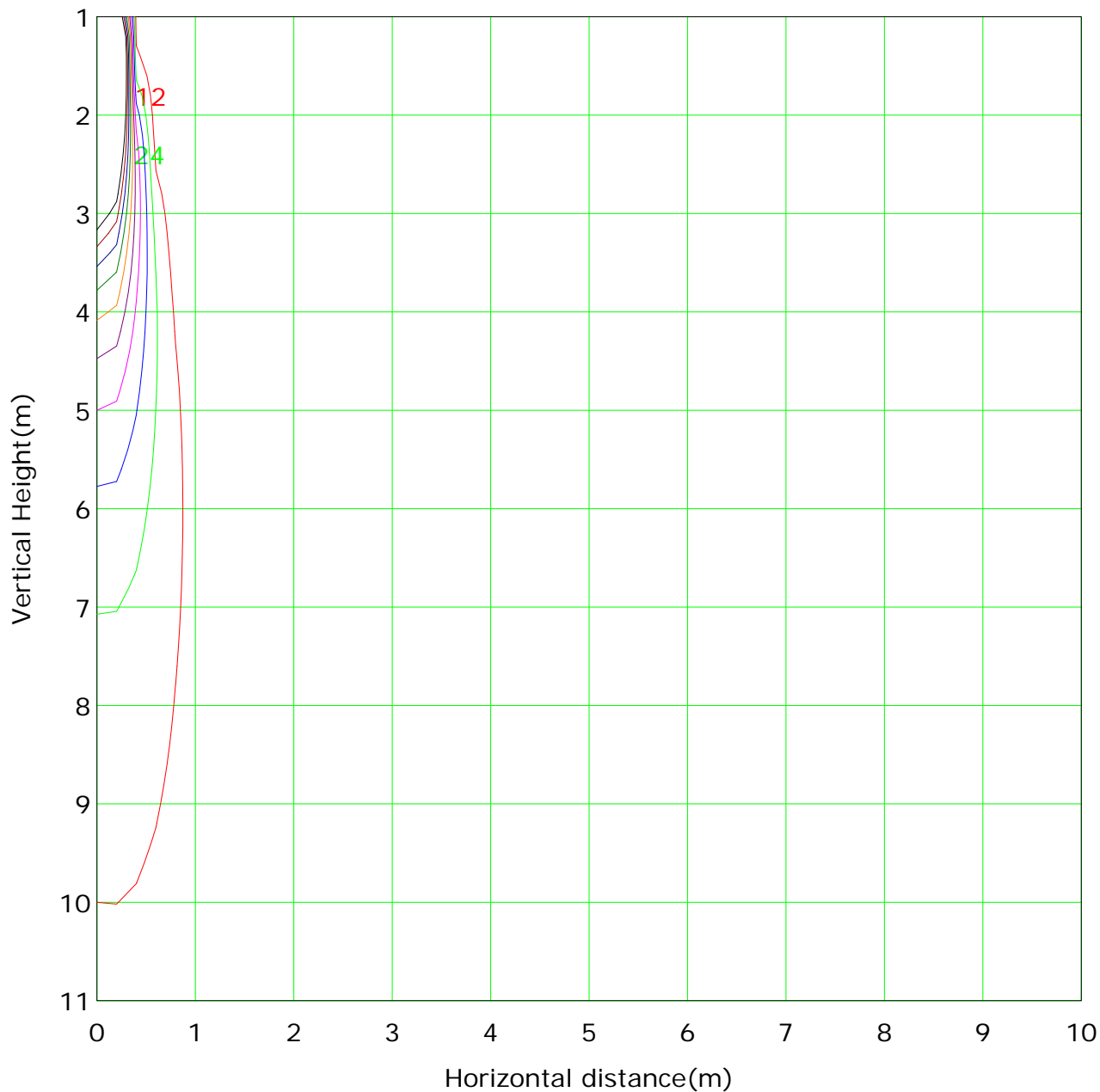
Humidity:

Inspector:

## Illuminance at a Distance



## Vertical IsoLux Plot



Lowest(m): 1m    Highest(m): 11    Max Lux: 1184	
( 1%): 12 lx	( 2%): 24 lx
( 3%): 36 lx	( 4%): 47 lx
( 5%): 59 lx	( 6%): 71 lx
( 7%): 83 lx	( 8%): 95 lx
( 9%): 107 lx	( 10%): 118 lx

C Plane (°):0.0-180.0: 180.0

Test Lab:

Test Type: TYPE C

Temperature:

Operator:

Gamma Plane (°):0.0-90.0: 1.0

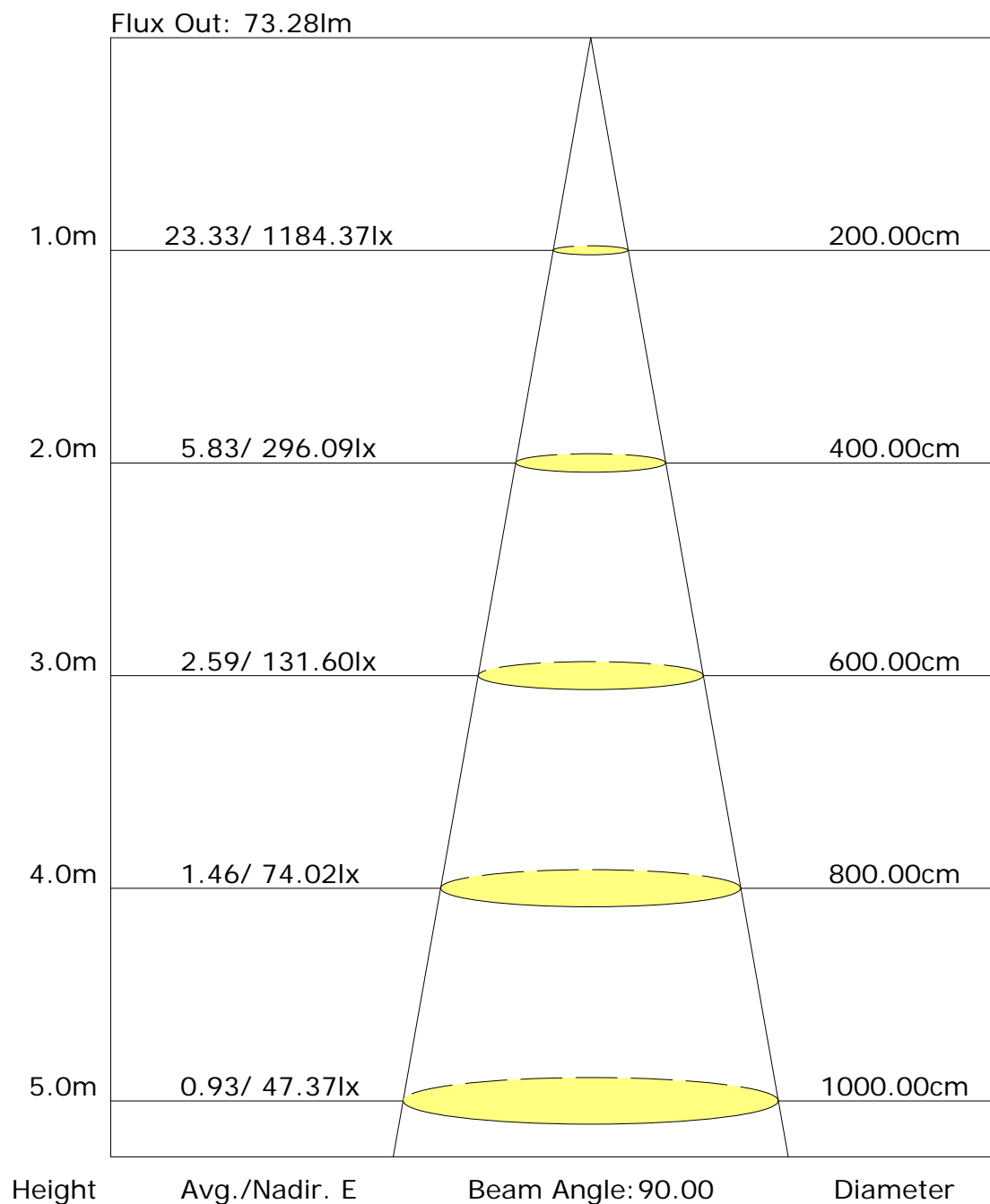
Test Device: CHL-6E

Distance: 3.000 m

Humidity:

Inspector:

## The average illuminance effective figure



## Candlepower Table

Unit: cd

GVC	C0.0	C180.0								
G0.0	1184.4	1184.4								
G1.0	1193.4	1142.0								
G2.0	1165.5	1062.8								
G3.0	1094.8	950.8								
G4.0	983.2	816.3								
G5.0	846.1	676.2								
G6.0	706.6	548.7								
G7.0	576.1	434.3								
G8.0	458.4	333.4								
G9.0	355.4	249.1								
G10.0	264.7	180.3								
G11.0	188.9	127.4								
G12.0	130.2	89.3								
G13.0	87.1	62.6								
G14.0	58.8	44.4								
G15.0	40.5	31.8								
G16.0	29.2	23.8								
G17.0	21.6	18.6								
G18.0	17.0	15.0								
G19.0	13.9	12.2								
G20.0	11.8	10.2								
G21.0	10.0	8.5								
G22.0	8.6	7.0								
G23.0	7.4	6.0								
G24.0	6.5	5.3								
G25.0	5.6	4.6								
G26.0	4.9	4.1								
G27.0	4.3	3.5								
G28.0	3.6	3.1								
G29.0	3.2	2.9								
G30.0	2.9	2.5								
G31.0	2.7	2.3								
G32.0	2.5	2.1								
G33.0	2.3	1.8								
G34.0	2.2	1.8								
G35.0	1.9	1.5								
G36.0	1.8	1.4								

C Plane (°):0.0-180.0: 180.0

Test Lab:

Test Type: TYPE C

Temperature:

Operator:

Gamma Plane (°):0.0-90.0:1.0

Test Device: CHL-6E

Distance: 3.000 m

Humidity:

Inspector:



## Candlepower Table (Continue 1)

Unit: cd

GVC	C0.0	C180.0								
G37.0	1.8	1.4								
G38.0	1.5	1.4								
G39.0	1.4	1.3								
G40.0	1.4	1.2								
G41.0	1.4	1.2								
G42.0	1.4	1.0								
G43.0	1.2	1.1								
G44.0	1.2	1.0								
G45.0	1.2	1.0								
G46.0	1.0	0.8								
G47.0	1.0	0.9								
G48.0	1.0	0.8								
G49.0	0.9	0.8								
G50.0	0.8	0.7								
G51.0	0.8	0.7								
G52.0	0.8	0.7								
G53.0	0.9	0.7								
G54.0	0.9	0.5								
G55.0	0.7	0.6								
G56.0	0.7	0.6								
G57.0	0.7	0.5								
G58.0	0.6	0.4								
G59.0	0.7	0.4								
G60.0	0.6	0.4								
G61.0	0.6	0.4								
G62.0	0.6	0.3								
G63.0	0.4	0.3								
G64.0	0.4	0.3								
G65.0	0.4	0.3								
G66.0	0.4	0.4								
G67.0	0.3	0.1								
G68.0	0.3	0.1								
G69.0	0.3	0.2								
G70.0	0.3	0.1								
G71.0	0.3	0.0								
G72.0	0.1	0.0								
G73.0	0.1	0.0								

C Plane (°):0.0-180.0: 180.0

Test Lab:

Test Type: TYPE C

Temperature:

Operator:

Gamma Plane (°):0.0-90.0:1.0

Test Device: CHL-6E

Distance: 3.000 m

Humidity:

Inspector:

## Unit: cd

Gamma Plane (°):0.0-90.0:1.0  
Test Device: CHL-6E  
Distance: 3.000 m  
Humidity:  
Inspector: