

Report No.:93.06215-Pendant Lighting

Test Time: 2022-04-27 09:31

Luminaire Property

Luminaire Category: Citizen 1203 3000K CRI90

Voltage: 213.6 V

Current: 0.067 A

Power: 13.90 W

Power Factor: 0.965

Photometric Results

CIE Class: Direct

Measurement Flux: 1305 lm

Downward Ratio: 100%

Total Rated Lamp Lumens: 1305.0 lm

Efficiency: 100%

Upward Ratio: 0%

Horizontal Diffuse Angle(25%,50%,75%,100%): H32.3,H25.3,H18.2,H0

Vertical Diffuse Angle(25%,50%,75%,100%): V32.3,V25.3,V18.2,V0

Luminaire Efficacy Rating (LER): 94

Central Intensity: 6266.84 cd

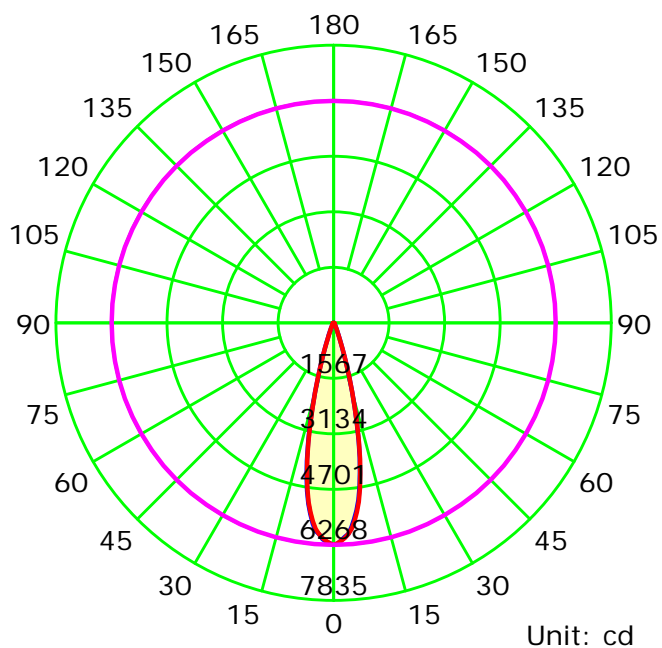
Max. Intensity: 6266.84 cd

Pos of Max. Intensity: H0 V0

Picture Of Luminaire



Luminous Intensity Distribution Curve



Average Diffuse Angle(50%): 25.3°

— C0-C180 — C90-C270 — G0

C Plane (°):0.0-180.0: 180.0

Test Lab:

Test Type: TYPE C

Temperature:

Operator:

Gamma Plane (°):0.0-90.0: 1.0

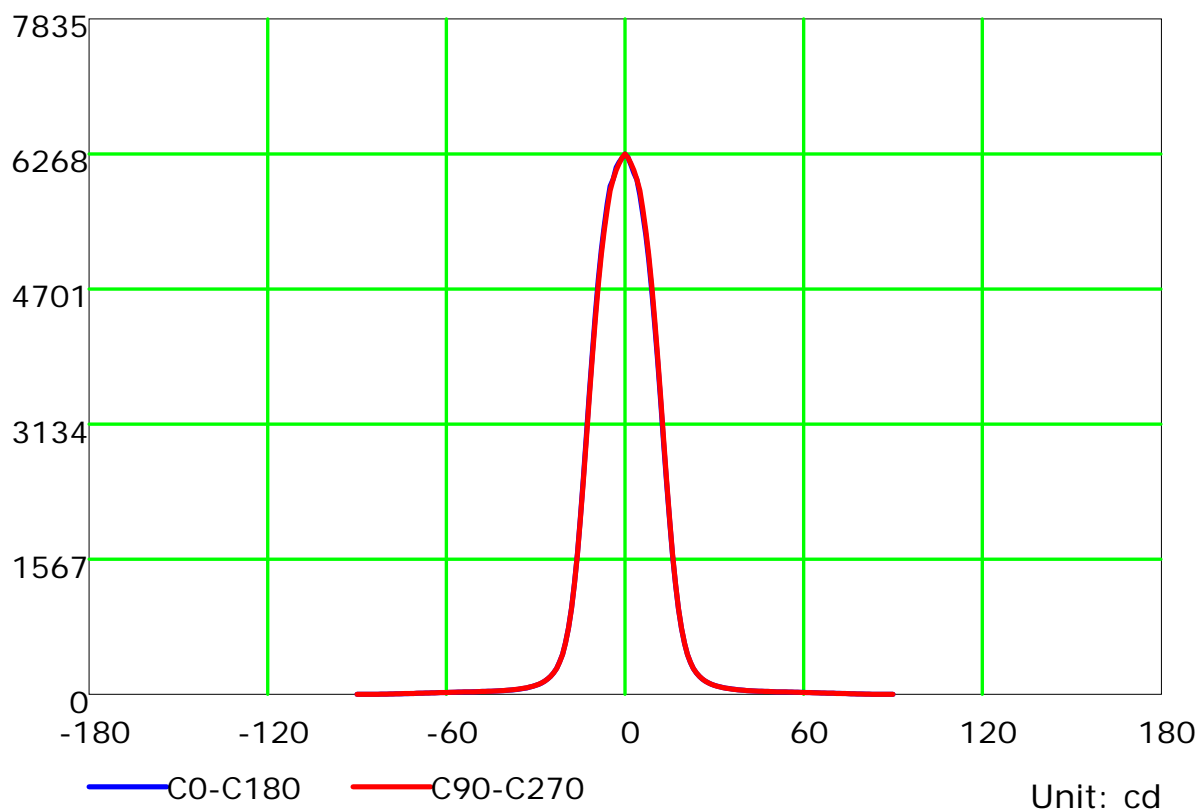
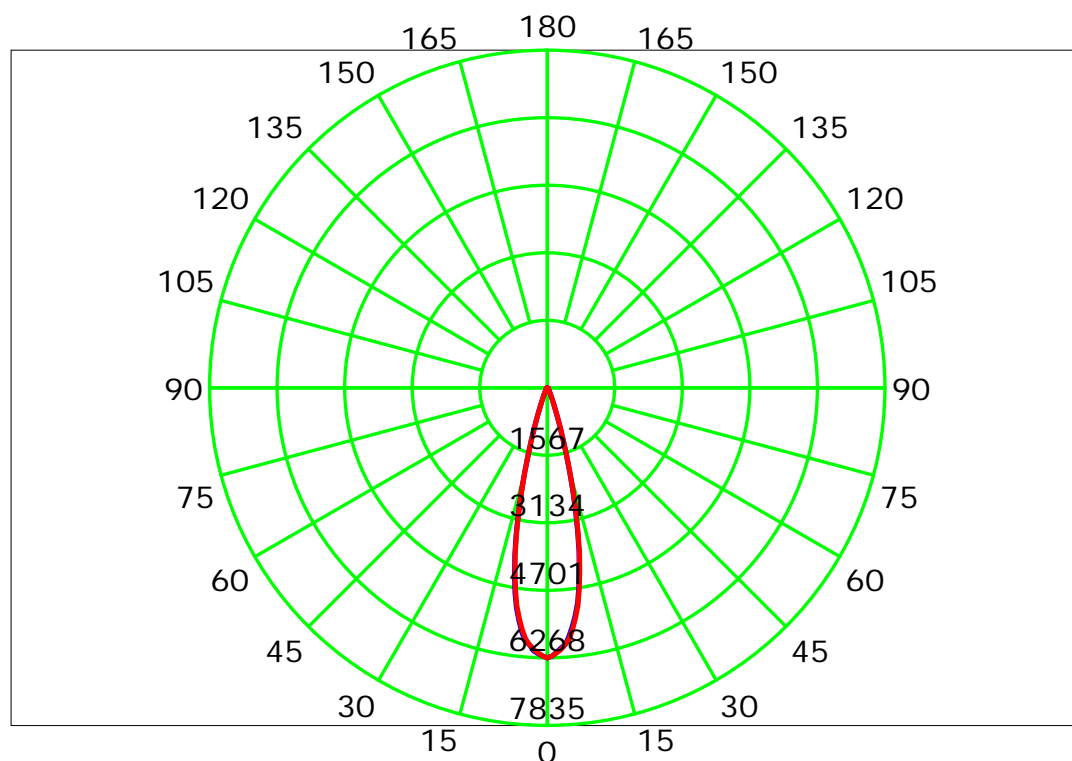
Test Device: CHL-6E

Distance: 3.000 m

Humidity:

Inspector:

Luminous Intensity Distribution Curve



C Plane (°):0.0-180.0: 180.0

Test Lab:

Test Type: TYPE C

Temperature:

Operator:

Gamma Plane (°):0.0-90.0:1.0

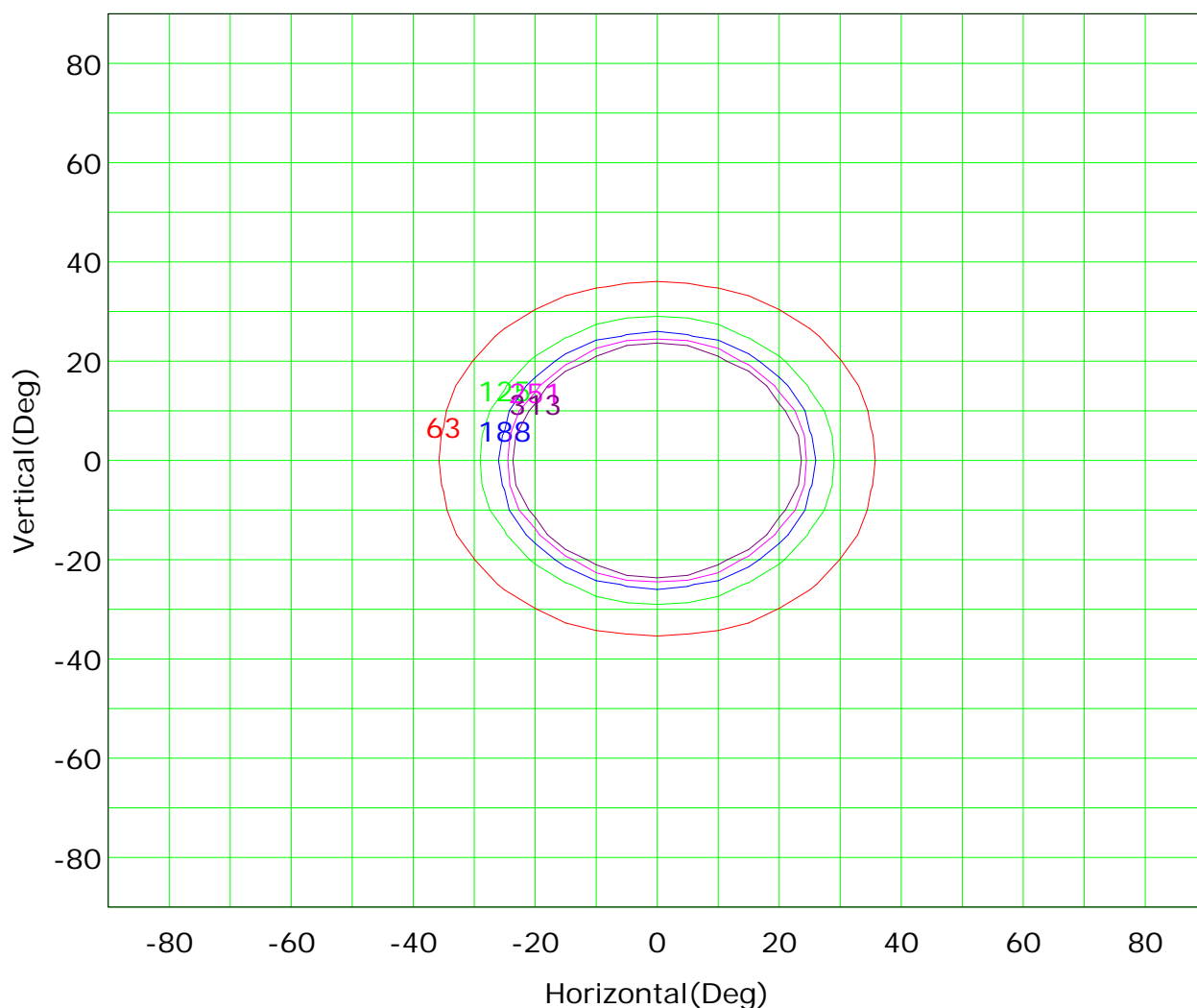
Test Device: CHL-6E

Distance: 3.000 m

Humidity:

Inspector:

Isocandela (rectangle)



I_{max} (100%): 6267 cd

(1%): 63 cd
(3%): 188 cd
(5%): 313 cd

(2%): 125 cd
(4%): 251 cd

C Plane (°): 0.0-180.0: 180.0

Test Lab:

Test Type: TYPE C

Temperature:

Operator:

Gamma Plane (°): 0.0-90.0: 1.0

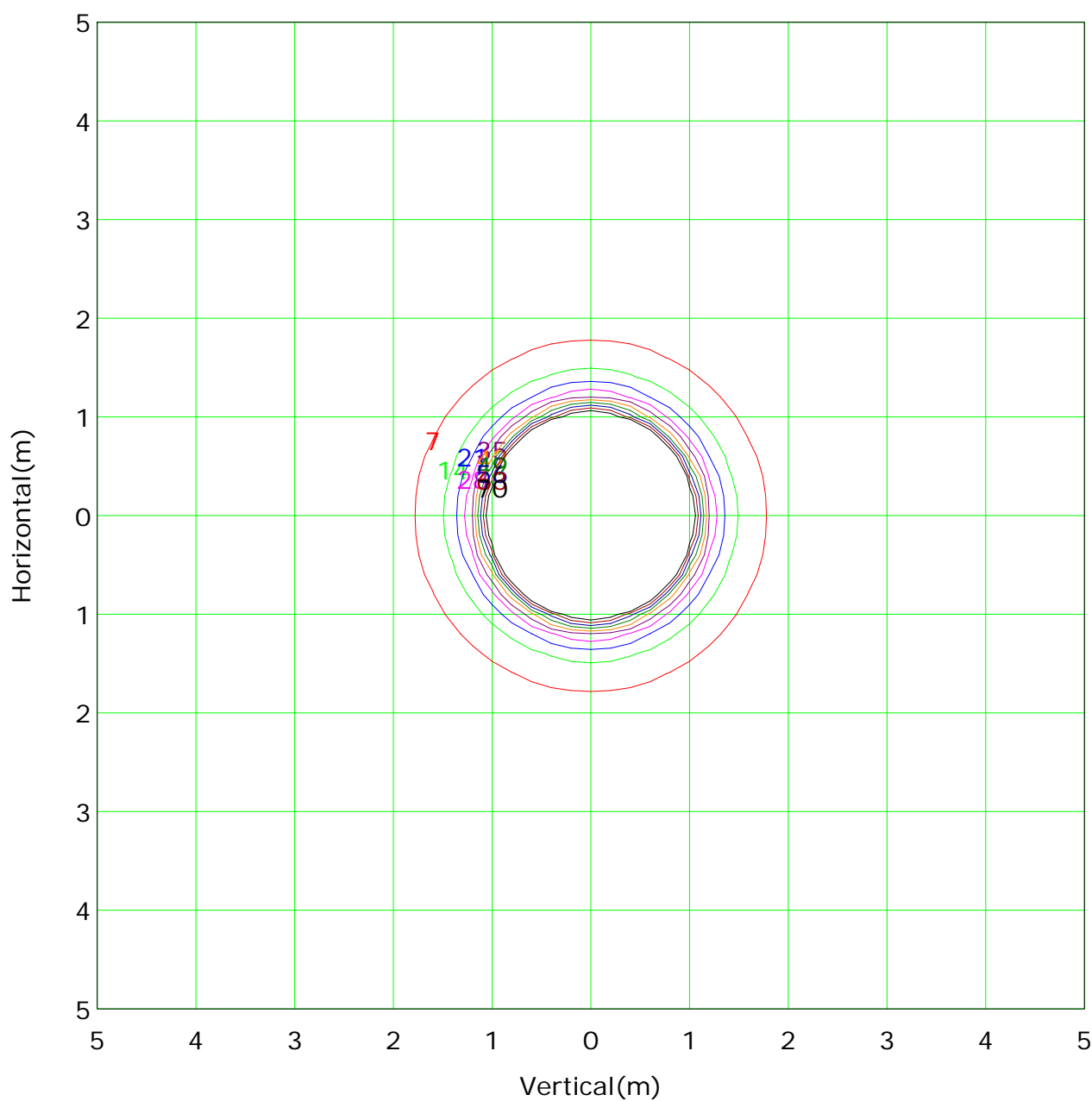
Test Device: CHL-6E

Distance: 3.000 m

Humidity:

Inspector:

IsoLux Plot



Mounting Height: 3m Max Lux(100%): 696 lx

(1%):	7 lx	(2%):	14 lx
(3%):	21 lx	(4%):	28 lx
(5%):	35 lx	(6%):	42 lx
(7%):	49 lx	(8%):	56 lx
(9%):	63 lx	(10%):	70 lx

C Plane (°):0.0-180.0: 180.0

Test Lab:

Test Type: TYPE C

Temperature:

Operator:

Gamma Plane (°):0.0-90.0: 1.0

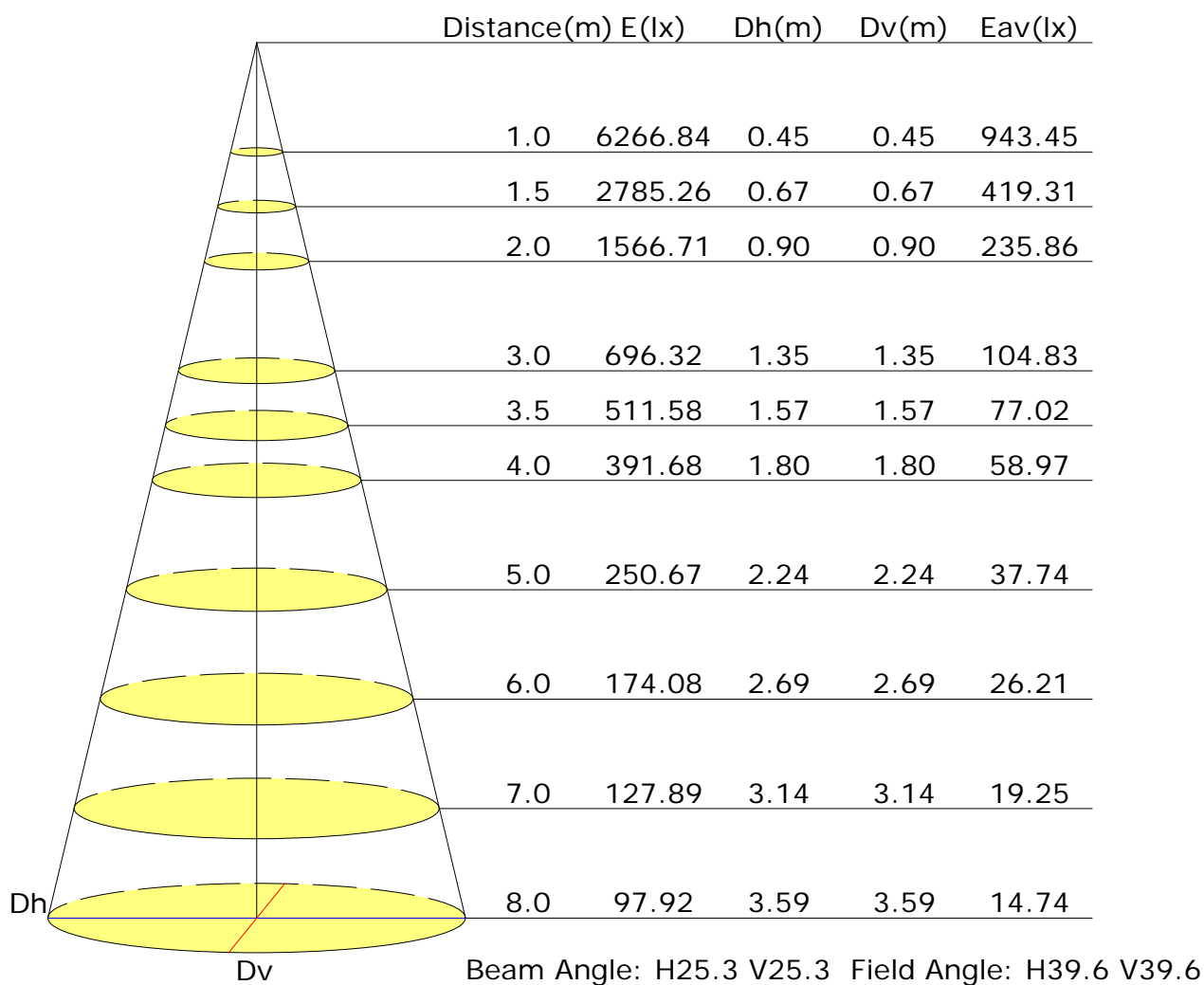
Test Device: CHL-6E

Distance: 3.000 m

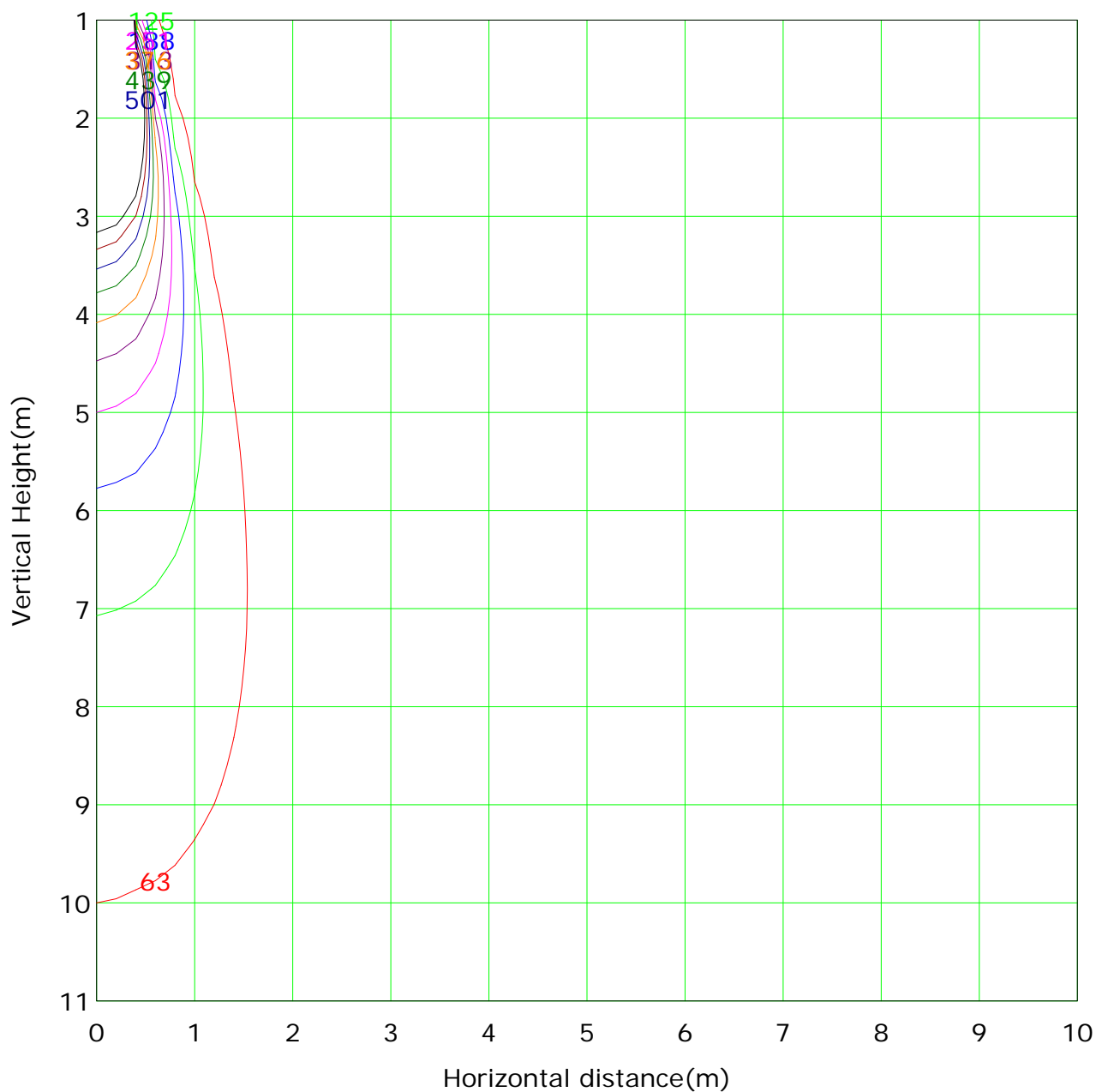
Humidity:

Inspector:

Illuminance at a Distance



Vertical IsoLux Plot



Lowest(m): 1m Highest(m): 11 Max Lux: 6267	
(1%): 63 lx	(2%): 125 lx
(3%): 188 lx	(4%): 251 lx
(5%): 313 lx	(6%): 376 lx
(7%): 439 lx	(8%): 501 lx
(9%): 564 lx	(10%): 627 lx

C Plane (°):0.0-180.0: 180.0

Test Lab:

Test Type: TYPE C

Temperature:

Operator:

Gamma Plane (°):0.0-90.0: 1.0

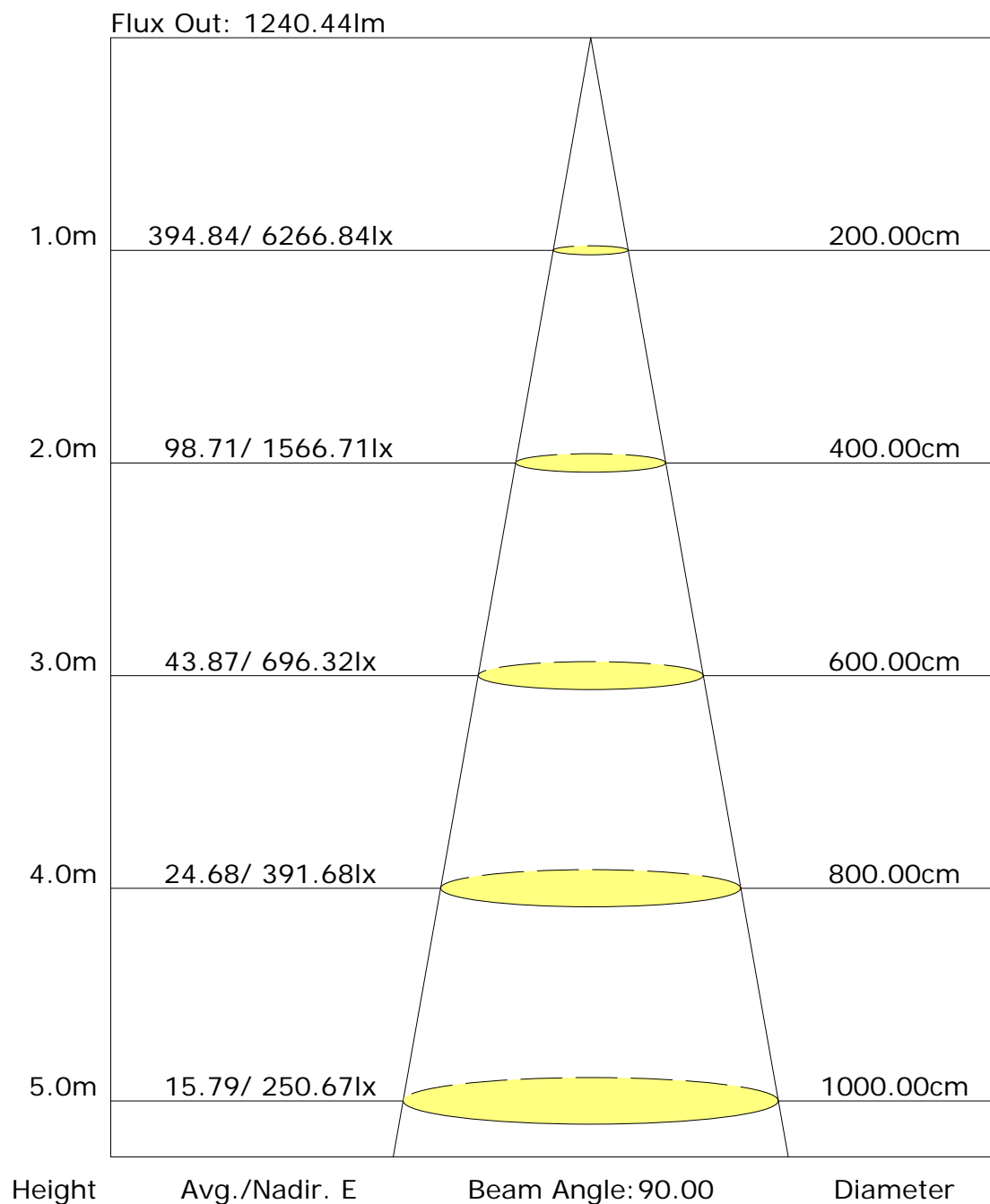
Test Device: CHL-6E

Distance: 3.000 m

Humidity:

Inspector:

The average illuminance effective figure



C Plane (°): 0.0-180.0: 180.0

Test Lab:

Test Type: TYPE C

Temperature:

Operator:

Gamma Plane (°): 0.0-90.0: 1.0

Test Device: CHL-6E

Distance: 3.000 m

Humidity:

Inspector:

Candlepower Table

Unit: cd

GVC	C0.0	C180.0								
G0.0	6266.8	6266.8								
G1.0	6230.7	6221.7								
G2.0	6141.2	6172.9								
G3.0	6048.2	6112.3								
G4.0	5971.4	5975.0								
G5.0	5791.5	5894.5								
G6.0	5569.2	5692.1								
G7.0	5328.9	5428.3								
G8.0	5043.3	5155.4								
G9.0	4681.8	4809.3								
G10.0	4275.2	4396.3								
G11.0	3865.8	3961.6								
G12.0	3393.2	3492.6								
G13.0	2917.9	3014.6								
G14.0	2447.1	2513.1								
G15.0	2007.9	2046.8								
G16.0	1611.2	1637.4								
G17.0	1268.7	1286.8								
G18.0	987.7	1003.1								
G19.0	762.7	770.8								
G20.0	589.2	598.2								
G21.0	462.7	464.5								
G22.0	368.7	375.0								
G23.0	299.1	301.8								
G24.0	248.5	250.3								
G25.0	208.7	209.6								
G26.0	177.1	179.8								
G27.0	153.6	153.6								
G28.0	134.6	132.8								
G29.0	118.4	116.6								
G30.0	104.8	104.8								
G31.0	94.9	93.1								
G32.0	85.8	84.9								
G33.0	78.6	75.9								
G34.0	72.3	69.6								
G35.0	66.9	64.2								
G36.0	62.3	58.7								

C Plane (°): 0.0-180.0: 180.0

Test Lab:

Test Type: TYPE C

Temperature:

Operator:

Gamma Plane (°): 0.0-90.0: 1.0

Test Device: CHL-6E

Distance: 3.000 m

Humidity:

Inspector:

Candlepower Table (Continue 1)

Unit: cd

GVC	C0.0	C180.0								
G37.0	57.8	55.1								
G38.0	53.3	51.5								
G39.0	50.6	48.8								
G40.0	47.0	46.1								
G41.0	43.4	44.3								
G42.0	41.6	41.6								
G43.0	39.8	39.8								
G44.0	38.0	38.9								
G45.0	36.2	36.2								
G46.0	36.2	36.2								
G47.0	34.3	34.3								
G48.0	33.4	34.3								
G49.0	32.5	32.5								
G50.0	30.7	30.7								
G51.0	28.9	29.8								
G52.0	28.9	28.9								
G53.0	28.9	28.0								
G54.0	28.9	28.0								
G55.0	26.2	27.1								
G56.0	27.1	26.2								
G57.0	25.3	25.3								
G58.0	25.3	23.5								
G59.0	23.5	23.5								
G60.0	22.6	21.7								
G61.0	21.7	21.7								
G62.0	20.8	20.8								
G63.0	19.0	19.0								
G64.0	19.9	17.2								
G65.0	18.1	17.2								
G66.0	16.3	16.3								
G67.0	15.4	15.4								
G68.0	14.5	14.5								
G69.0	13.6	13.6								
G70.0	13.6	12.6								
G71.0	11.8	9.9								
G72.0	11.8	9.9								
G73.0	9.9	9.0								

C Plane (°): 0.0-180.0: 180.0

Test Lab:

Test Type: TYPE C

Temperature:

Operator:

Gamma Plane (°): 0.0-90.0: 1.0

Test Device: CHL-6E

Distance: 3.000 m

Humidity:

Inspector:

